

BLUES PROGRESSION 1

D7 (I)



5 G7 (IV)

D7 (I)

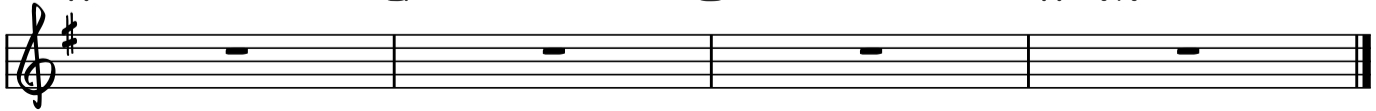


9 A7 (V)

G7 (IV)

D7 (I)

A7 (V)



BLUES PROGRESSION 2

13 D7(I)

A musical staff in treble clef with a key signature of one sharp (F#). The staff contains four measures, each with a whole note chord represented by a horizontal line on the second line of the staff. The first measure is labeled D7(I).

17 G7(IV)

D7 (I)

A musical staff in treble clef with a key signature of one sharp (F#). The staff contains four measures, each with a whole note chord represented by a horizontal line on the second line of the staff. The first measure is labeled G7(IV) and the second measure is labeled D7 (I).

21 A7 (V)

D7 (I)

A7 (V)

A musical staff in treble clef with a key signature of one sharp (F#). The staff contains four measures, each with a whole note chord represented by a horizontal line on the second line of the staff. The first measure is labeled A7 (V), the second measure is labeled D7 (I), and the third measure is labeled A7 (V). The staff ends with a double bar line.

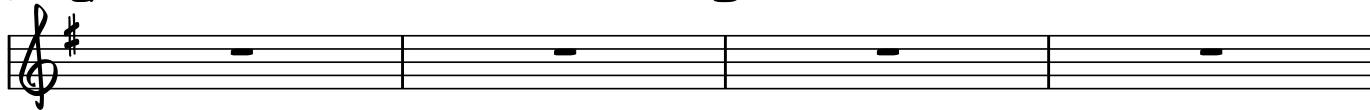
25 D7 (I)

BLUES PROGRESSION 3



29 G7 (IV)

D7 (I)

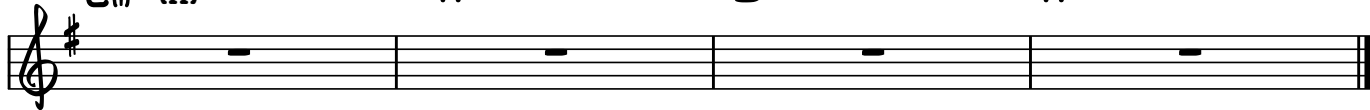


33 E<sub>m</sub>7 (II)

A7 (V)

D7 (I)

A7 (V)



2

37 D7(I)

BLUES PROGRESSION 4

A musical staff in treble clef with a key signature of one sharp (F#). The staff contains four measures, each with a whole rest. The first measure is labeled with '37 D7(I)' above it.

41 G7(IV)

D7 (I)

A musical staff in treble clef with a key signature of one sharp (F#). The staff contains four measures, each with a whole rest. The first measure is labeled with '41 G7(IV)' above it, and the second measure is labeled with 'D7 (I)' above it.

45 Em7 (II)

A7 (V)

D7 (I)

Em7

A7

A musical staff in treble clef with a key signature of one sharp (F#). The staff contains four measures, each with a whole rest. The first measure is labeled with '45 Em7 (II)' above it, the second with 'A7 (V)', the third with 'D7 (I)', and the fourth with 'Em7' and 'A7' above it. The staff ends with a double bar line.

49 D7(I)

BLUES PROGRESSION 5

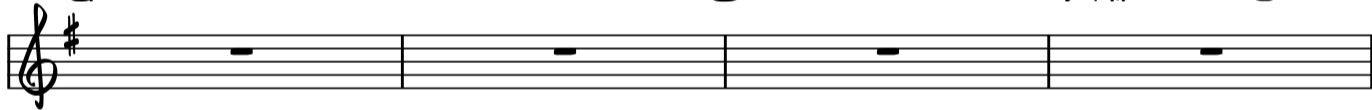
Am7 D7



53 G7(IV)

D7 (I)

F#m7(b5) B7(b9)



57 Em7(II)

A7 (V)

D7 (I)

Em7

A7

